



OPTIMIX



CONTENTS

- 3** Brand Story
- 4** Racing Masts
- 6** Racing Booms
- 8** Racing Sprits
- 10** Mix and Match
- 12** Optimax Sails
- 14** Optimax Foils
- 16** Optimax Accessories

Photo credits:
Matias Capizzano, www.capizzano.com
Annemiek van Kesteren Photography



Optimax®, world's most winning Optimist spars was founded in 1975 and has grown to become the most famous Optimist racing spar worldwide. Due to our **48 years** of outstanding practical experience, high-end material selection and intensive connection with international top sailors and coaches, Optimax has become the worldwide leading Optimist racing spar manufacturer. Optimax spars are used by the **top sailors**, and have **won** many World and Continental championships.

All our spars are made of the **best materials**, the masts are made of superior Lanurep space-craft alloy, ensuring maximum stiffness/weight ratio. Every batch of tubes is **tested** to ensure constant **quality** and bent characteristics. All masts are hard anodized to a dark grey color, providing a very durable and long lasting surface.

These spars are equipped with the best parts you can find on the market: Harken® blocks, Windesign® parts, and Optimax® accessories.

Divided in 4 main categories MK3 Flex, MK3 Medium, MK3 and MK4, to create the **best spar combination** for every sailor.

“No spar wins more races”

In addition to spars, Optimax supplies Optimax racing sails, Optimax racing foils and Optimax racing accessories.

WWW.OPTIMAXSPARS.COM

RACING MASTS

"Used by every world champion in the past decade"
"No spar wins more races"



**MK III
FLEX**

**MK III
MEDIUM**

MK III

MK IV

OX25AB3F **MK3 Flex mast*** **<35 kg**
OX25AB3F-NP **MK3 Flex, mast only**
The most flexible and active mast which is designed for light weight sailors.

OX25AB3M **MK3 Medium mast*** **30-40 kg**
OX25AB3M-NP **MK3 Medium, mast only**
This allround racing mast is designed for light-mid weight sailors and can be matched with all booms and sprits.

OX25AB3 **MK3 mast*** **35-45 kg**
OX25AB3-NP **MK3, mast only**
This allround racing mast is designed for mid weight sailors and can be matched with all booms and sprits.

OX25AB4 **MK4 mast*** **>45 kg**
OX25AB4-NP **MK4, mast only**
The most stiff and powerfull mast, designed for experienced, heavier weight sailors.

*Including rigging pack (OX25)



- | | |
|---|---|
| 1 Windesign® wind indicator PRO | 6 3 mm Dyneema® halyard with Windesign low friction ring |
| 2 Pennant holders | 7 Hard anodized aluminium Clamcleat |
| 3 Superior Lanurep spacecraft alloy | 8 Aluminium pin stop |
| 4 High grade 45 um hard anodized surface | 9 Sprit adjuster handle |
| 5 Harken hook-in block | 10 Low friction end stop |

RACING BOOMS

"Used by every world champion in the past decade"
"No spar wins more races"

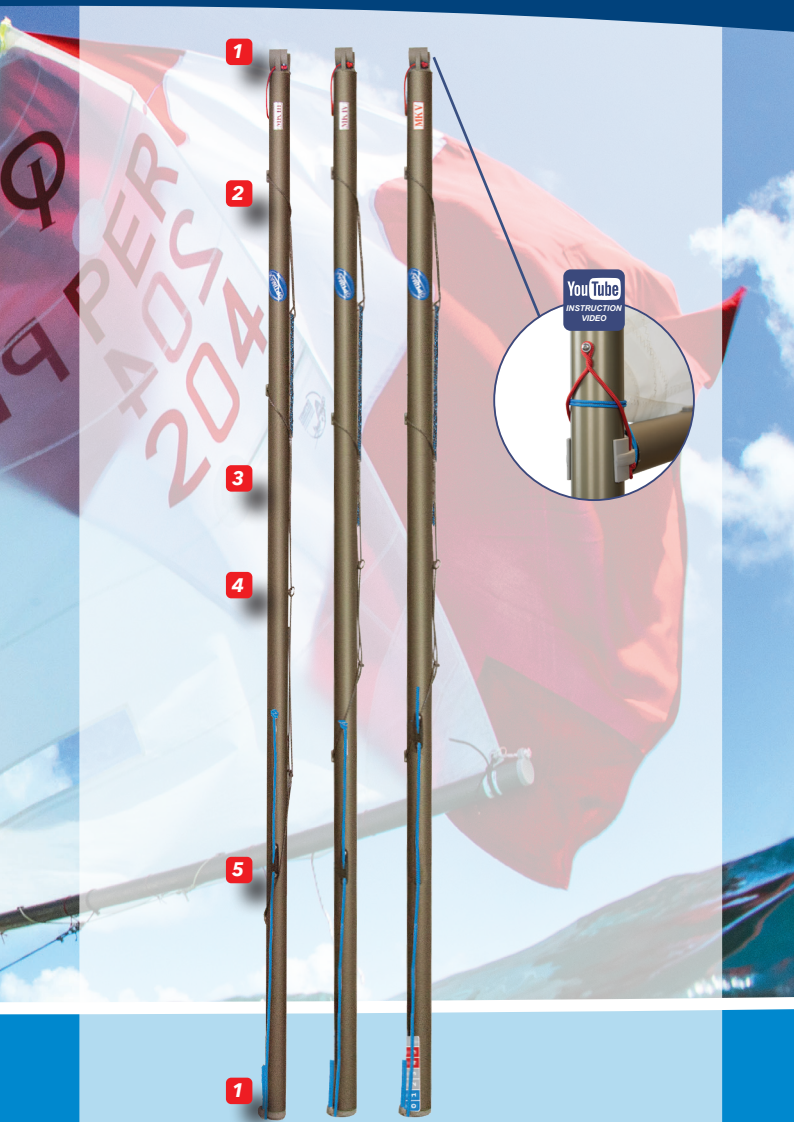


MK III **MK IV** **MK V**

OX35M3 **Racing boom MK3, 40 mm**
The most flexible and lightweight racing boom.

OX35M4 **Racing boom MK4, 45 mm**
The stiffer allround racing boom.

OX35M5 **Racing boom MK5, 48 mm**
A lightweight yet ultra stiff and powerful racing boom.



- 1** Glass fibre filled Nylon in- and outboard end fittings
- 2** 3 mm pre-spliced pure Dyneema® vang
- 3** High grade alloy, dark grey anodized
- 4** 3 mm pure Dyneema® bridle with stainless steel ring
- 5** Grey glass fibre filled Nylon V-shaped cleat

RACING SPRITS

"Used by every world champion in the past decade"
"No spar wins more races"



MK III HYPERFLEX **MK III FLEX** **MK III**

OX45M3HF **Racing sprit MK3 Hyperflex 28 mm**
The most flexible racing sprit creates less distortion of the sail shape and provides an active change of tension on the leech. For the more experienced sailor who can adjust their mainsheet tension constantly.

OX45M3F **Racing sprit MK3 Flex, 26,6 mm**
A light and flexible racing sprit.

OX45M3 **Racing sprit MK3, 27 mm**
An allround sprit which can be used with all masts and booms.



- 1** Grey glass fibre filled Nylon sprit ends
- 2** 15 cm heat shrinkable sprit protection tubing, prevents wear between mast and sprit
- 3** Superior Lanarep spacecraft alloy, anodized to a dark grey color

MIX & MATCH

"No spar wins"

For **every sailor** the best combination: divided in 4 main categories
 You can **mix and match** your choice in mast sets
 combination for your experience

OX234M3F

- OX234M3F40HF
- OX234M3F45
- OX234M3F45HF
- OX234M3F48
- OX234M3F48HF

SET: MK3 Flex mast, 40 mm

- SET: MK3 Flex mast, 40 mm
- SET: MK3 Flex mast, 45 mm
- SET: MK3 Flex mast, 45 mm
- SET: MK3 Flex mast, 48 mm
- SET: MK3 Flex mast, 48 mm

OX234M3M

- OX234M3M40HF
- OX234M3M40F
- OX234M3M45
- OX234M3M45HF
- OX234M3M45F
- OX234M3M48
- OX234M3M48HF
- OX234M3M48F

SET: MK3 Medium mast, 40 mm

- SET: MK3 Medium mast, 40 mm
- SET: MK3 Medium mast, 45 mm
- SET: MK3 Medium mast, 45 mm
- SET: MK3 Medium mast, 48 mm
- SET: MK3 Medium mast, 48 mm
- SET: MK3 Medium mast, 48 mm
- SET: MK3 Medium mast, 48 mm
- SET: MK3 Medium mast, 48 mm

OX234M3

- OX234M340HF
- OX234M340F
- OX234M345
- OX234M345HF
- OX234M345F
- OX234M348
- OX234M348HF
- OX234M348F

SET: MK3 mast, 40 mm

- SET: MK3 mast, 40 mm
- SET: MK3 mast, 40 mm
- SET: MK3 mast, 45 mm
- SET: MK3 mast, 45 mm
- SET: MK3 mast, 45 mm
- SET: MK3 mast, 48 mm
- SET: MK3 mast, 48 mm
- SET: MK3 mast, 48 mm

OX234M4

- OX234M4HF
- OX234M4F
- OX234M448
- OX234M448HF
- OX234M448F

SET: MK4 mast, 45 mm

- SET: MK4 mast, 45 mm
- SET: MK4 mast, 45 mm
- SET: MK4 mast, 48 mm
- SET: MK4 mast, 48 mm
- SET: MK4 mast, 48 mm

(OX25):



MATCH

ns more races”

main categories: MK3 Flex, MK3 Medium, MK3 and MK4.

mast, boom and sprit to **create** the best spar

erience, weight, length and sail.

40 mm boom, Flex sprit

< 35 kg

40 mm boom, Hyperflex sprit

45 mm boom, Flex sprit

45 mm boom, Hyperflex sprit

48 mm boom, Flex sprit

48 mm boom, Hyperflex sprit

40 mm boom, MK3 sprit

30 – 40 kg

40 mm boom, Hyperflex sprit

40 mm boom, Flex sprit

45 mm boom, MK3 sprit

45 mm boom, Hyperflex sprit

45 mm boom, Flex sprit

48 mm boom, MK3 sprit

48 mm boom, Hyperflex sprit

48 mm boom, Flex sprit

45 mm boom, MK3 sprit

35 – 45 kg

45 mm boom, Hyperflex sprit

45 mm boom, Flex sprit

45 mm boom, MK3 sprit

45 mm boom, Hyperflex sprit

45 mm boom, Flex sprit

45 mm boom, MK3 sprit

45 mm boom, Hyperflex sprit

45 mm boom, Flex sprit

48 mm boom, MK3 sprit

> 45 kg

48 mm boom, Hyperflex sprit

48 mm boom, Flex sprit

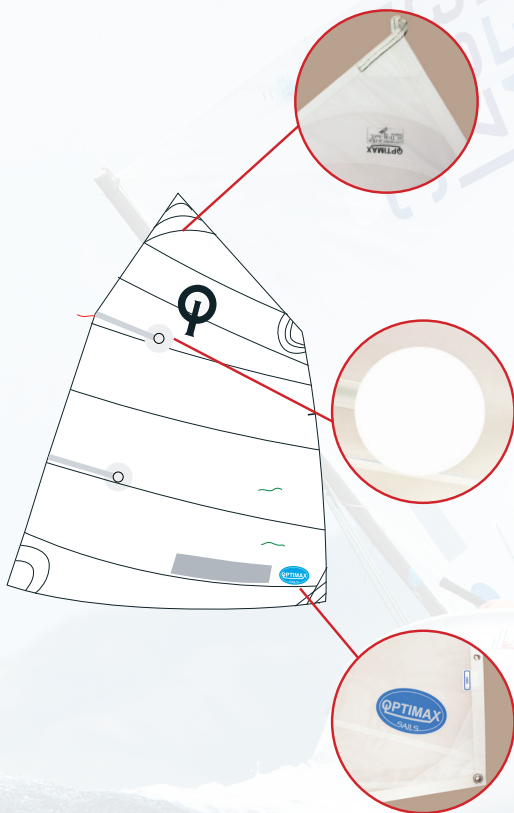
48 mm boom, MK3 sprit

48 mm boom, Hyperflex sprit

48 mm boom, Flex sprit

***With rigging pack (OX25):**

- 2x Nylon top pins
- 1x Harken ball bearing hook-in block
- 1x Windesign wind indicator PRO
- 1x Windesign 25 mm low friction ring
- 1x Nylon sprit adjuster handle
- 1x 3 mm Dyneema halyard line
- 1x 4 mm halyard line
- 5x 2.2 mm tack lines
- 14x 1.2 mm double lacing lines
- 1x Deck collar with mast sleeve



CERO

UNO

DOS

OX56 Optimax racing sail CERO <35 kg
A flat sail designed for light weight sailors.

OX57 Optimax racing sail UNO 35-45 kg
A fuller sail designed for mid weight sailors.

OX58 Optimax racing sail DOS >45 kg
A more powerful sail designed for mid to heavy weight sailors.



“OPTIMAX SAILS”

Optimax®, famous for its ultimate race winning spars, has three racing sails, CERO, UNO and DOS under the name “OPTIMAX SAILS”. Made of Contender® Polykote 2.8 sailcloth. The combination of sail design and sailcloth make Optimax sails one of the best sails for the Optimist racers.

Sails developed with feedback of top sailors and professional Optimist coaches.

ADVANTAGES:

- Contender® Polykote 2.8 sailcloth
- Active leech
- Tapered racing sail battens
- Window
- IODA royalty label
- Telltales
- 14x 1.2 mm double sail ties
- 5x 2.2 mm corner ties
- Sail bag



OX75	Optimax foil set including rudder fittings made in CAD designed aluminium molds
OX75C	Optimax daggerboard
OX75R	Optimax rudder including rudder fittings
OX78	PRO daggerboard slot inserts
OX90	PU Nylon coated buoyancy bag 48 L



OX70E



OX70TE



OX70JWR



OX31



OX30ES



OX70RF



OX70GB



OX70RC

OX70E	Black anodized aluminium tiller extension with releasable joint/swivel with rope core
OX70TE	Black anodized aluminium tiller complete with tiller extension OX70E
OX70JWR	Joint with rope core
OX31	Adjustable stainless steel mast step
OX30ES	Low friction end stop
OX70RF	Set rudder fittings (long+short)
OX70GB	Transom fitting with back plate
OX70RC	Rudder retaining clip



OX60B



OX60



OX7HI3



OX60R



OX60S



OX65



OX7L



MODEL	D1	D2	Ø	T	WEIGHT
Ø25	25	9	6	10	6 g

OX60B	Halyard system with low friction ring
OX60	Harken halyard with 2 blocks
OX7HI3	Harken hook-in block
OX60R	Halyard line with low friction ring
OX60S	Sprit halyard control line
OX65	Pro line upgrade package: HT Polyester outhaul with Technora®/ Dyneema® halyard and vang
OX7L	Windesign 25 mm low friction ring



OX9



OX12



OX8



OX91



OX25PS



OX36LE

OX9	Windesign wind indicator PRO
OX12	Lacing lines for mast and boom 5x 2.2 mm tacklines, 14x 1.2 mm lacing lines
OX8	Pair of black pennant holders
OX91	Praddel paddle, grey
OX25PS	'Pin stop' for effective downhaul function
OX36LE	Lacing eye grey incl rivets



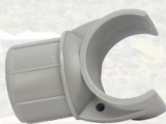
OX36BJM3



OX36ESM3



OX46M3



OX36BJM4



OX36ESM4



OX46M4

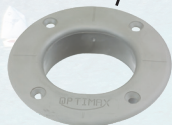


OX25CC



OX36OC

OX61CS



OX61C



OX61S

OX36BJM3	Boom jaws, 40 mm
OX36ESM3	End stop for boom, 40 mm
OX46M3	Set of sprit ends 27 mm, grey
OX36BJM4	Boom jaws, 45 mm
OX36ESM4	End stop for boom, 45 mm
OX46M4	Set of sprit ends 29 mm, grey
OX25CC	Hard anodized aluminium Clamcleat
OX36OC	Outhaul cleat
OX61CS	Low friction mast collar with mast sleeve
OX61C	Low friction deck collar
OX61S	Low friction mast sleeve



OX36SE



OX36SH



OX36BS



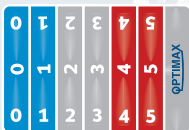
OX36DHC



OX36DH



OX80



OX36T



OX24MBS



OX36SE	Stainless steel bridler ring
OX36SH	Stainless steel snap shackle
OX36BS	Pre-spliced pure Dyneema bridle with stainless steel ring
OX36DHC	Downhaul control line
OX36DH	Pre-spliced pure Dyneema downhaul
OX80	Nylon sprit adjuster handle
OX36T	Trimstrip Optimax PRO
OX24MBS	Measurement-band sticker



WWW.OPTIMAXSPARS.COM
Tel: +31-30-2414068
Email: info@optimaxspars.com